

Apexgi Catalog

— Joe Xia



Who's [Apexgi.com](https://www.apexgi.com)

We are a professional Chinese supplier with 12 years of experience in producing sport wear clothing. We mainly specialize in customizing and wholesaling grappling uniforms, compression suits, shorts, rash guards, hoodies, equestrian clothing.....



Joe Xia—Sales
Manager



Alice Wang—Co-
Founder



Leck Lai—Sales Rep.



JoJo Liu—Sales Rep.

The numbers

The background of the slide is a photograph of a clothing store. It shows several black metal racks with wooden shelves. The racks are filled with various clothing items, including trousers, dresses, and tops. The store has a clean, modern aesthetic with light-colored walls and wooden shelving.

300+

Skilled Employees

100+

Global Clients

30K

Monthly Production capacity

Our Featured Lines

Custom with small MOQs!



- BJJ Kimonos
- Rash Guards
- Equestrian Suits
- T-shirts
- Shorts
- Martial Arts



BJJ Kimonos

- 350gsm/480gsm pearl weave fabric
- 100% cotton
- Pre-shrunk
- A0-A6 size for adults
- Y0-Y6 for kids
- Unisex

Fabrics

The competition Jiu-Jitsu tops are made of pearl weave cloth, 100% cotton.

The pants are made of ripstop/twill/Canvas fabrics



Pearl Weave



Ripstop

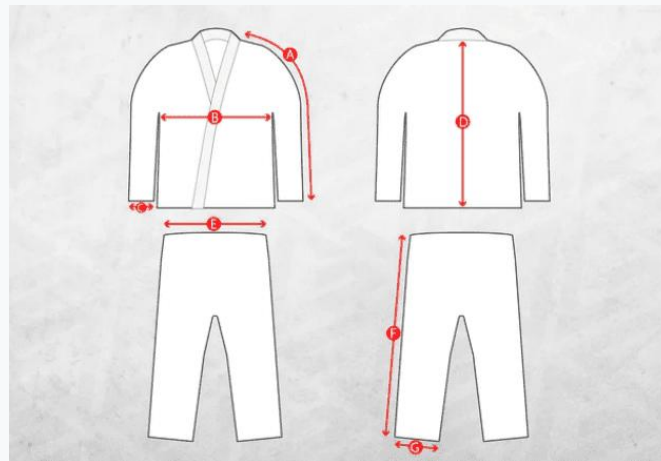


Twill



Canvas

Adult's Kimonos

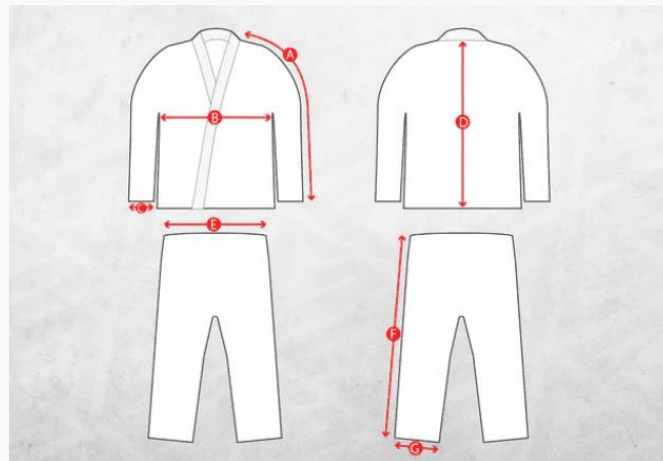


+/- 0.75" tolerance	A0	A1	A1L	A2	A2L	A3	A3L	A4	A5	A6
JACKET										
A SLEEVE LENGTH	27in 69cm	27.75in 70.5cm	29.25in 74.25cm	28.25in 72cm	29.75in 75.5cm	30in 76cm	31.5in 76cm	31in 79cm	32.25in 82cm	33.5in 85 cm
B CHEST WIDTH	21.25in 54cm	22.5in 57cm	22.5in 57cm	24in 61cm	24in 61cm	26in 66cm	26in 66cm	26.75in 68cm	27.5in 70cm	28in 71 cm
C SLEEVE OPENING	6.25in 16cm	6.25in 16cm	6.25in 16cm	6.75in 17cm	6.75in 17cm	6.75in 17cm	6.75in 17cm	7.5in 19cm	8in 20.5cm	8in 20.25 cm
D JACKET LENGTH BACK	28in 71cm	29.25in 74.5cm	29.25in 74.5cm	31in 78.5cm	31in 78.5cm	31.5in 80cm	31.5in 80cm	34.25in 87cm	35in 89cm	35.5in 90 cm
PANT										
E WAIST WIDTH	20in 51cm	20.5in 52cm	20.5in 52cm	21.75in 55cm	21.75in 55cm	23.5in 59.5cm	23.5in 59.5cm	24.75in 63cm	25.5in 65cm	26in 66 cm
F OUTSEAM LENGTH	35in 89cm	37in 94cm	38.5in 97.75cm	38in 96.5cm	39.5in 96.5cm	40in 101.5cm	41.5in 105.5cm	41in 104cm	42in 107cm	42in 107 cm
G LEG OPENING	7.25in 8.5cm	7.75in 20cm	7.75in 20cm	8.5in 21.5cm	8.5in 21.5cm	9.25in 23.5cm	9.25in 23.5cm	9.75in 24.5cm	10in 25.5cm	11in 28 cm

SIZE	HEIGHT (FT)	WEIGHT (LBS)	HEIGHT (CM)	WEIGHT (KG)
A0	5'3"-5'5"	140-155	160-165	64-70
A1	5'5"-5'7"	155-170	165-170	70-77
A2	5'7"-5'10"	170-190	170-178	77-86
A3	5'10"-6'2"	190-225	178-188	86-102
A4	6'1"-6'4"	230-260	185-193	104-118
A5	6'2"-6'5"	260-300	188-196	118-136

Kids's Kimonos

SIZE	HEIGHT (Ft)	WEIGHT (LBS)	HEIGHT (CM)	WEIGHT (KG)
Y0	3'6"-3'9"	30-40	107-114	13-18
Y1	3'9"-3'11"	40-50	114-119	18-22
Y2	3'11"-4'2"	50-60	119-127	22-27
Y3	4'2"-4'4"	60-70	127-132	27-32
Y4	4'4"-4'6"	70-80	132-137	32-36
Y5	4'6"-4'9"	80-95	137-145	36-43
Y6	4'9"-4'11"	95-110	145-150	43-50



JACKET (+/- 0.75" tolerance)	Y0	Y1	Y2	Y3	Y4	Y5	Y6
SLEEVE LENGTH: FROM (HPS) TO EDGE OF SLEEVE	14" / 35.5 cm	16" / 40 cm	18" / 46 cm	20.5" / 52 cm	23" / 58 cm	24" / 62 cm	30" / 67.5 cm
CHEST WIDTH: 1" (2.5CM) BELOW ARMPIT, EDGE TO EDGE	14.25" / 36 cm	15" / 38 cm	15.75" / 40 cm	17" / 43 cm	17.25" / 44 cm	18" / 46 cm	19" / 48.5 cm
SLEEVE OPENING: FROM EDGE TO EDGE	4.5" / 11.5 cm	4.5" / 11.5 cm	5" / 12.5 cm	5.5" / 14 cm	6" / 15 cm	6.25" / 16 cm	7" / 17 cm
JACKET LENGTH BACK: FROM LAPEL SEAM TO EDGE	16.75" / 42.5 cm	17.75" / 45 cm	20" / 50.5 cm	22" / 56 cm	24 in / 61 cm	25.75" / 65.5 cm	26.75" / 68 cm
PANT (+/- 0.75" tolerance)							
WAIST WIDTH: FROM EDGE TO EDGE	8.5" / 21.5 cm	9" / 23 cm	9.5" / 24 cm	10" / 26.5 cm	10.25" / 27 cm	10.75" / 27.5 cm	11" / 28 cm
OUTSEAM LENGTH: FROM BACK PANEL OF PANT TO BOTTOM	23.5" / 60 cm	25" / 63 cm	25.5" / 65 cm	27" / 69 cm	28.75" / 73 cm	30.75" / 78 cm	31.5" / 80 cm
INSEAM	17" / 43 cm	17.75" / 45 cm	19.25" / 49 cm	19.75" / 50.5 cm	21" / 53.5 cm	22.5" / 57.5 cm	23" / 58.5 cm

FAQs of sizes

The meaning of L/S/H/T

A0 = X-small.

A1 = Small.

A1L (Long) = Small but longer in the sleeves on jacket and pants.

2S (Short)= Medium but shorter in the sleeves on jacket and pants.

A2S (Slim)= Medium but with a tighter fit.

A2 = Medium.

A2H (Husky) = Medium but wider in jacket and pants.

A2L (Long) = Medium but longer in the sleeves on jacket and pants.

A2T (Tall) = Medium but longer in the sleeves on jacket and pants.

A2XL (Extra Long) = Medium but extra long in the sleeves on jacket and pants.

A3 = Large.

A3S (Short) = Large but shorter in the sleeves on jacket and pants.

A3S (Slim)= Large but with a tighter fit.

A3H (Husky) = Large but wider in jacket and pants.

A3L (Long) = Large but longer in the sleeves on jacket and pants.

A3T (Tall) = Large but longer in the sleeves on jacket and pants.

A4 = X-large.

A4S (Short) = X-Large but with a tighter fit.

A5 = XX-Large.

A6 = XXX-Large.

Care Guides

- Wash it in cold water to prevent shrinking or fabric damage.
- Use a gentle detergent to avoid damaging the fabric and shrinking the gi.
- Avoid using fabric softeners or bleach, as these can also damage the fabric.
- Hang your gi to dry to prevent shrinkage and avoid damaging the fabric.
- Avoid leaving your gi wet for too long, as it can cause mildew and odors.
- Wash your gi after each use to prevent the buildup of sweat, bacteria, and odors.



Rash Guards

- Polyester/Nylon and spandex
- Quick-drying, anti-odor
- Reduce fatigue and soreness
- Our stylish designs are sleek and fashionable, making them suitable for both athletic and casual wear.



Custom Rashie

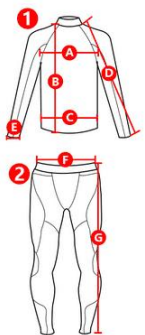
- The minimum order is 100 pieces.
- Sublimated printing
- Free design



Custom BJJ Spats

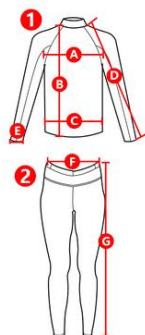
- The minimum order is 100 pieces.
- Sublimated printing
- Free design

Size Charts



	1		2	
	Weight(kg)	Height(cm)	Waist(cm)	Height(cm)
XS	62-69	160-167	77-81	88
S	70-77	168-175	82-86	90
M	78-87	176-183	87-91	92
L	88-97	184-188	92-96	94
XL	98-107	189-200	97-101	96
XXL	108-117	201-212	102-106	98

(cm)	XS	S	M	L	XL	XXL
A	46	48	50	52	54	56
B	56	57	59	61	63	64
C	34	36	38	39	42	42.5
D	64	64.5	67	69	70.5	74
E	8	8.5	8.5	9	9	9
F	77-81	82-86	87-91	92-96	97-101	102-106
G	88	90	92	94	96	98



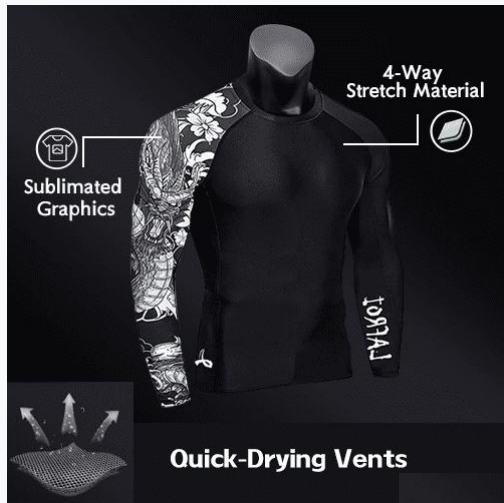
	1		2	
	Weight(kg)	Height(cm)	Waist(cm)	Height(cm)
XS	45	155	40-45	145-150
S	50	165	50-65	155-165
M	55	170	60-75	160-175
L	60	175	65-85	170-185
XL	75	180	80-99	180-194
XXL	85	185	89-120	190-204

(cm)	XS	S	M	L	XL	XXL
A	40	42	44	46	48	50
B	52	54	56	58	60	62
C	32	34	36	38	40	42
D	63	64	65	66	67	68
E	7.5	8	8.5	8.5	9	9
F	40-45	50-65	60-75	65-85	80-99	89-102
G	145-150	155-165	160-175	170-185	180-194	190-204



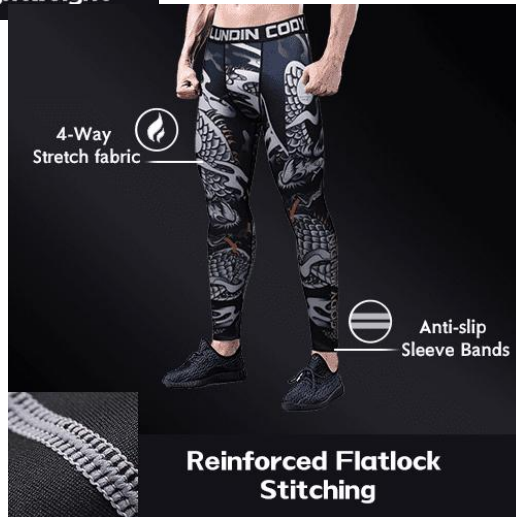
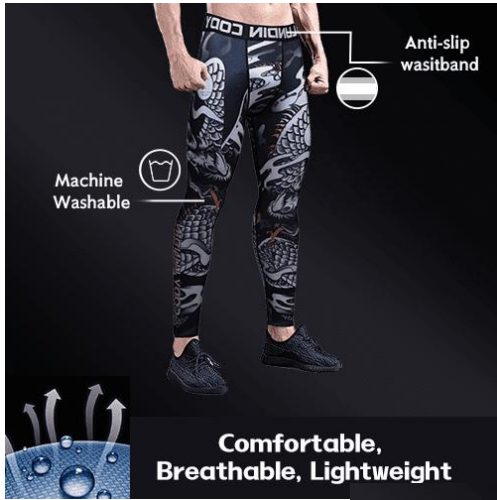
	1		2	
	Age	Height(cm)	Waist(cm)	Hips(cm)
XS	6	47.5	67-71	81-86
S	8	50	71-76	86-91
M	10	52	76-81	91-96
L	12	54.5	86-91	96-106
XL	14	57	91-96	106-111

(cm)	XS	S	M	L	XL
A	28	30	32	34	36
B	47.5	50	52	54.5	57
C	67-71	71-76	76-81	86-91	91-96
D	81-86	86-91	91-96	96-106	106-111



Best Rash Guards for You

- Quick-drying
- Anti-odor
- Sublimation
- Durable



Benefits From BJJ Spats

- Protection
- Compression
- Comfort
- Machine washable



Shorts

- Polyester or Nylon fabric
- Sublimated printing and embroidery
- Anti-Tear



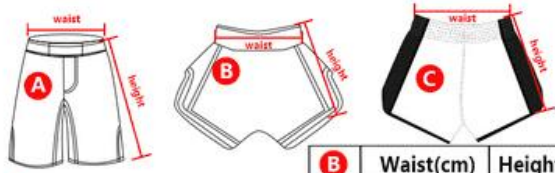
Casual



Muay Thai



Boxing



A	Waist(cm)	Height(cm)
S	75	51
M	80	52.5
L	85	55
XL	90	57.5
XXL	95	60

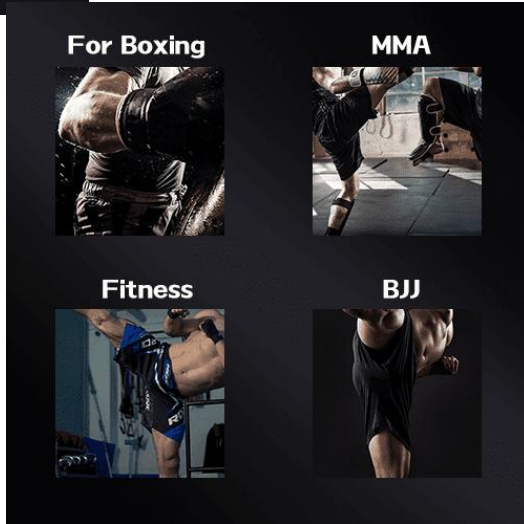
B	Waist(cm)	Height(cm)
XS	70-75	33
S	75-80	35
M	80-85	37
L	85-90	40
XL	90-95	43
XXL	95-100	46

C	Waist(cm)	Height(cm)
XXS	72-76	37
XS	77-81	38
S	82-86	39
M	87-91	40
L	92-96	41
XL	97-101	42
XXL	102-106	43

kg cm	20	35	40	45	50	55	60	65	70	75	80	85	90
115-152	XXS	XS	S										
125-135	XS	XS	S	S									
135-145			S	S	M	M							
145-155			S	M	M	M	L						
155-165				M	L	L	L	L	XL				
156-175						L	XL	XL	XL	XXL	XXL	XXL	
175-190								XXL	XXL	XXL	XXXL	XXXL	XXXL

Size Charts

- Check the sizing chart for waist measurements.
- Consider the style, as different styles fit differently.
- Try them on to ensure a proper fit and range of motion.
- Look for a comfortable waistband to avoid discomfort during training.



The Best Active Shorts

- Anti-tear
- 360-degree stretch
- Comfort
- Multiple occasions

The Customize Process



Fabric Selection

Choosing the right fabric



Cutting

Cutting fabric according to design.



Sewing

Sew each piece of fabric together



Packaging Shipping

Package the items with custom packaging



Design

Free design according to your requirements



Fabric Inspection

Checking incoming materials



Sublimation or Embroidery

Sublimation for shorts and rash guards.
Embroidery for BJJ uniforms



Inspection

Inspect each item before it leaves the factory



After Sales

Track the shipment and gather user feedback

Your one-stop outdoors wear goes here.

Joe Xia

MD | www.apexgi.com

M: +86 133 1696 9746

E: joe@apexgi.com

A: No. 39I, Ruikang Park, Ruikang Rd, Hengli Town, Dongguan

Code 523073, China.

Try Pitch



Joe

WhatsApp 联系人



Joe

